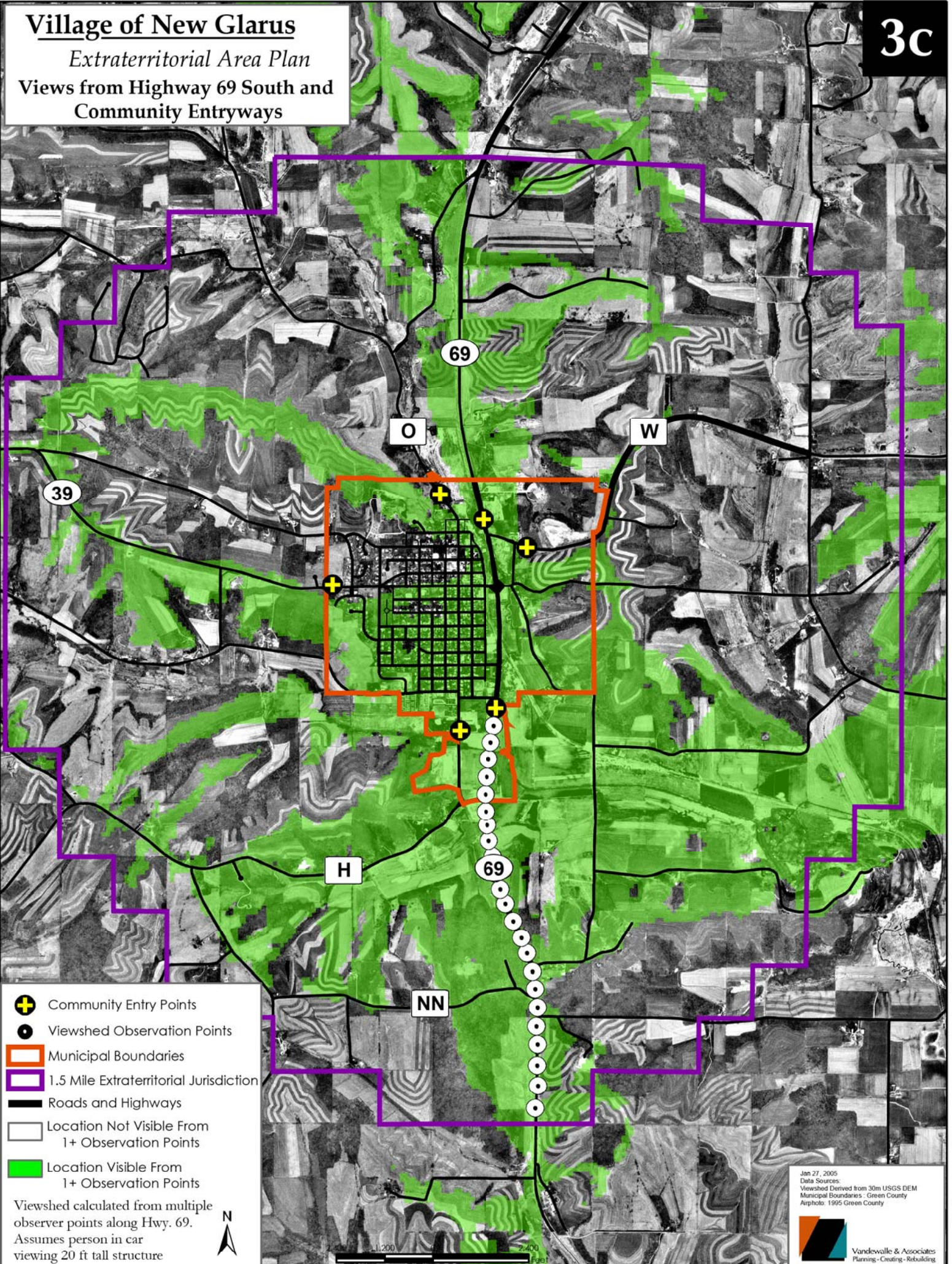


Village of New Glarus

Extraterritorial Area Plan

Views from Highway 69 South and Community Entryways

3c



- ⊕ Community Entry Points
- Viewshed Observation Points
- ▭ Municipal Boundaries
- ▭ 1.5 Mile Extraterritorial Jurisdiction
- ▬ Roads and Highways
- ▭ Location Not Visible From 1+ Observation Points
- ▭ Location Visible From 1+ Observation Points

Viewshed calculated from multiple observer points along Hwy. 69. Assumes person in car viewing 20 ft tall structure



Jan 27, 2005
Data Sources:
Viewshed Derived from 30m USGS DEM
Municipal Boundaries - Green County
Aerphoto - 1995 Green County

Vandeville & Associates
Planning - Creating - Rebuilding