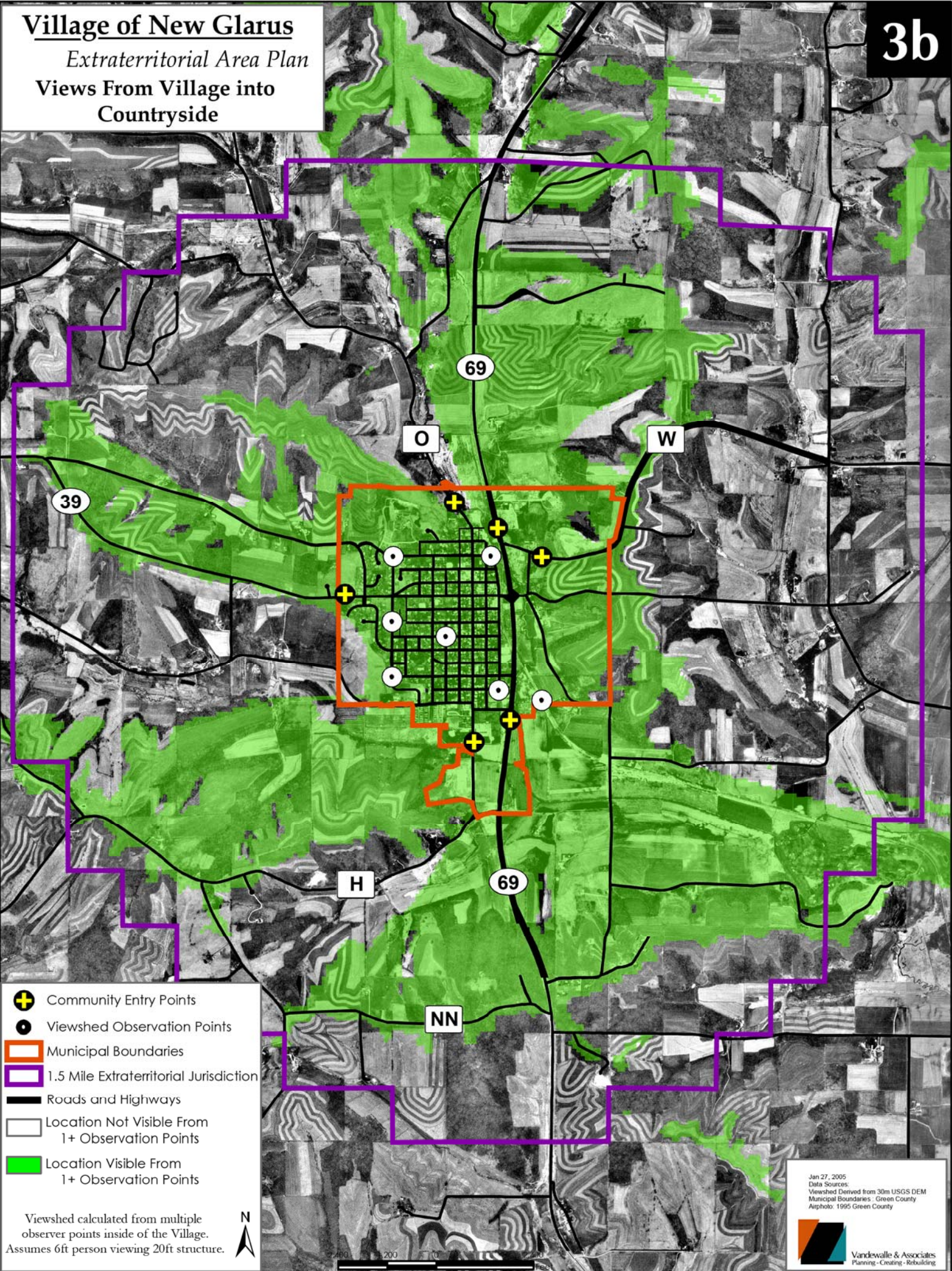


Village of New Glarus

Extraterritorial Area Plan

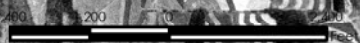
Views From Village into
Countryside

3b



- Community Entry Points
- Viewshed Observation Points
- Municipal Boundaries
- 1.5 Mile Extraterritorial Jurisdiction
- Roads and Highways
- Location Not Visible From 1+ Observation Points
- Location Visible From 1+ Observation Points

Viewshed calculated from multiple observer points inside of the Village. Assumes 6ft person viewing 20ft structure.



Jan 27, 2005
Data Sources:
Viewshed Derived from 30m USGS DEM
Municipal Boundaries - Green County
Aerialphoto: 1995 Green County

