

Outline

- ❖ Rules of Procedure
- ❖ Introductions
- ❖ Roles & Responsibilities
- ❖ Teamwork & Planning
- ❖ Building on the Past
- ❖ Locations
- ❖ Glarner Park
- ❖ Current Site Plan Proposal
- ❖ Building Proposal
- ❖ Balancing Costs & Size
- ❖ Responses to Submitted Questions
- ❖ Questions & Answers
 - ❖ Answers to submitted questions will be read
 - ❖ New questions

Informational Meeting

hosted by

The New Glarus Public Library
Board of Trustees

June 30, 2016



New Glarus
Public Library

Responses to questions submitted to the Library Board on June 14, 2016 will be available on the village website by tomorrow.

If a question is asked that is very close to one already answered, we will summarize and refer you to the full response online.

Rules of Procedure for the Special Library Board Meeting

1. Library Board members have been asked to be polite, fair, and maintain an open mind. We would like to ask the same of the audience.
2. The format is question and answer. Comments and debate will be discouraged so all questions can be addressed.
3. If we do not have the accurate data or statistic available to answer a question, we reserve the right to answer that question via the library website.
4. In order for an audience member to speak, they must stand when the previous speaker is finished, wait to be recognized by the Chair.
5. The speaker shall state his/her name before asking the question.
6. Audience members will refrain from personal or side conversations.
7. Comments and questions between library board members and members of the audience must first be recognized by the Chair.

The Library Board consists of seven members, appointed by the Village Board for a term of three years

Rules set by Wisconsin State Statutes, Chapter 43

The main role of the Library Board is to support the facility, operation, and services provided by the village and library staff for the municipal library

Who is the Library Board?

Seven people, working to support the enrichment of the community



Linda
Hiland
President

Suzi
Janowiak
Vice President

Lexa
Speth
Secretary

Kevin
Budsberg
Treasurer

Petra
Streiff
*Village Board
Liaison*

Jody
Hoesly
Trustee

Bob
Bergum
Trustee

90+ years teaching

11 years working in libraries

8 Bachelor's, **5** Master's degrees

3 current or previous Village Trustees

Mix of public and private work

Long-term village and town residents

A former NFL player, and a former Registered Nurse

***Above all, we love New Glarus,
and are grateful for the support and
generosity of the community***

Village Board Roles

- ❖ Determines the village budget and levy
- ❖ Assesses taxes upon its residents
- ❖ Decides which village departments receive resources
- ❖ Sets utility rates (PW/PS)
- ❖ Determines zoning
- ❖ Presents referenda to voters
- ❖ Determines best use of village-owned land
- ❖ “Owns & Administers” land on behalf of the library
- ❖ Makes final approval of plans via Plan Commission, Village Board

Roles & Responsibilities

The limits of the Library Board's Authority

The Library Board:

- 🛡️ Manages its budget
- 🛡️ Makes requests of the Village Board
- 🛡️ Tracks and assesses library service patterns
- 🛡️ Predicts future service use patterns
- 🛡️ Sets library hours of operation
- 🛡️ Oversees fundraising
- 🛡️ Assesses site suitability
- 🛡️ Obtains bids for library construction
- 🛡️ Creates balanced project proposals
- 🛡️ Prepares site and building proposals
- 🛡️ Maintains Donor Privacy Policy

The Library Board Does Not:

- 🛡️ Impose taxes
- 🛡️ Own, sell property independent of the village
- 🛡️ Create referenda

How Size Projections Are Made

- ❖ Space needs studies completed by library staff, SCLS building consultant using DPI standards
- ❖ Space needs worksheet determines appropriate size based on best practices and building code, standards for libraries
- ❖ Space includes collection space (print and non-print), computers, seating space, staff work spaces, meeting spaces, study rooms, mechanical spaces
- ❖ Building Program Statement (2012) compiled and used by architects to create building concept
- ❖ Library Board balances needs, building costs, funds needed to support space

Teamwork & Planning

An orchestra of input determines needs

Library Director & Staff

- 🛡 Interact with patrons on daily basis
- 🛡 Expert on community and use of resources

Site Assessment Task Force (2001)

- 🛡 Assess buildings, land for appropriateness for library
- 🛡 Rank locations based on score

SouthCentral Library System (SCLS) Building Consultant:

- 🛡 Service included in membership
- 🛡 Involved in all system expansion projects (many)
- 🛡 Makes projections based on collection use stats

Dimension IV Madison Design Group

- 🛡 Architects for project
- 🛡 Extract data from Building Program Statement to create concept
- 🛡 Generate final plans, final construction documents

Maas Brothers Construction

- 🛡 Construction Manager at Risk — Guarantees max. project price
- 🛡 Directs construction of building

Building on the Past, A Solid Foundation

How NGPL Serves this Community

Over the past 10 years, the New Glarus Public Library:

- 🛡 Greeted more than 130,000 visitors
- 🛡 Checked out 795,000+ items
- 🛡 Held 575+ children's programs
- 🛡 Enhanced the school district and day care resources
- 🛡 Digitized local history that is searchable with Google
- 🛡 Helped more than 90,000 patrons with information questions
- 🛡 Provided 100,000+ internet sessions
- 🛡 Expanded access to thousands of e-books

On the average day in 2014, the New Glarus Public Library was visited by 100 people, 200 items were checked out, and 100 online sessions were hosted.

The New Glarus community supports a library that

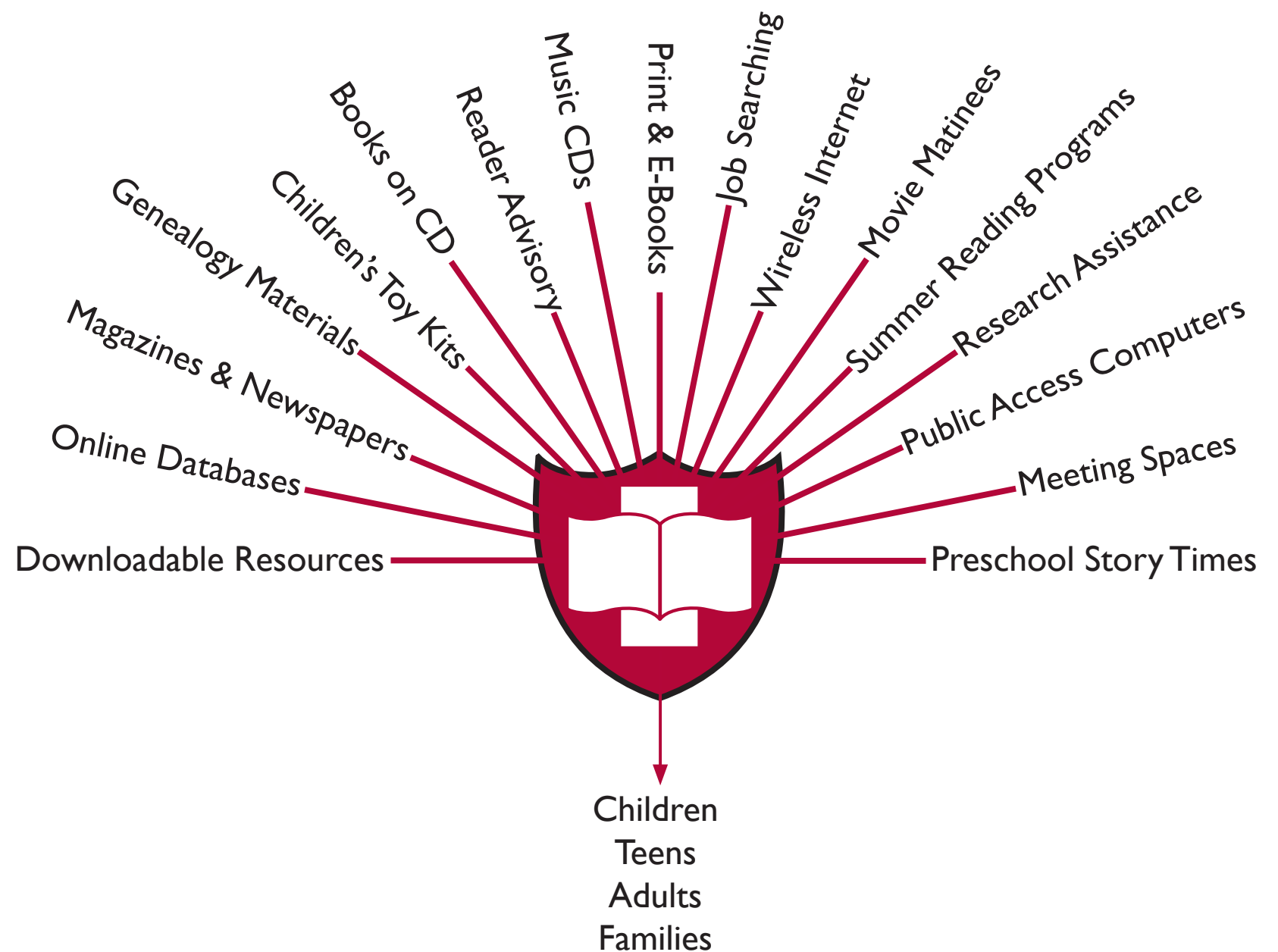
- ❖ Welcomes all
- ❖ Honors our culture
- ❖ Offers outstanding programs
- ❖ Encourages youth literacy
- ❖ Supports our aging residents
- ❖ Builds community partnerships
- ❖ Provides access to quality information

"I use the library as a resource for projects ideas for the children, books to supplement my curriculum, and books to grow my professional development... They don't realize that there are supplemental materials as well. If the library was able to move into a bigger space we could spend time there exploring the library, reading, and enjoying the space without disturbing the other patrons. To do this we need a new building."

-Corrine Hendrickson
Owner/Operator Corrine's
Little Explorers in
endorsement letter for ALA
Best Small Library in America

Programs, Services, and Collections

How NGPL Serves our Community



Assessment Criteria

Access:

Does site allow safe vehicular & pedestrian access?

Does site allow universal access?

Capacity:

Is existing structure big enough?

Is load bearing capacity at least 150 lbs/sq ft?

On-site parking & room for expansion?

Enough land to support building, setbacks, landscape?

Suitability/Desirability of Site:

Is site centrally located?

Is it in a nuisance-free environment?

Is the site compatible with nearby services?

Flexibility of Design:

Is open, one-level design possible?

Does site support a “library-friendly” configuration?

Space for outdoor programming?

Site Availability:

Is site available?

Would selection remove property from the tax base?

Are there other complicating factors to consider?

Site-specific Criteria:

Are there building restrictions, or is the building on a historic preservation list?

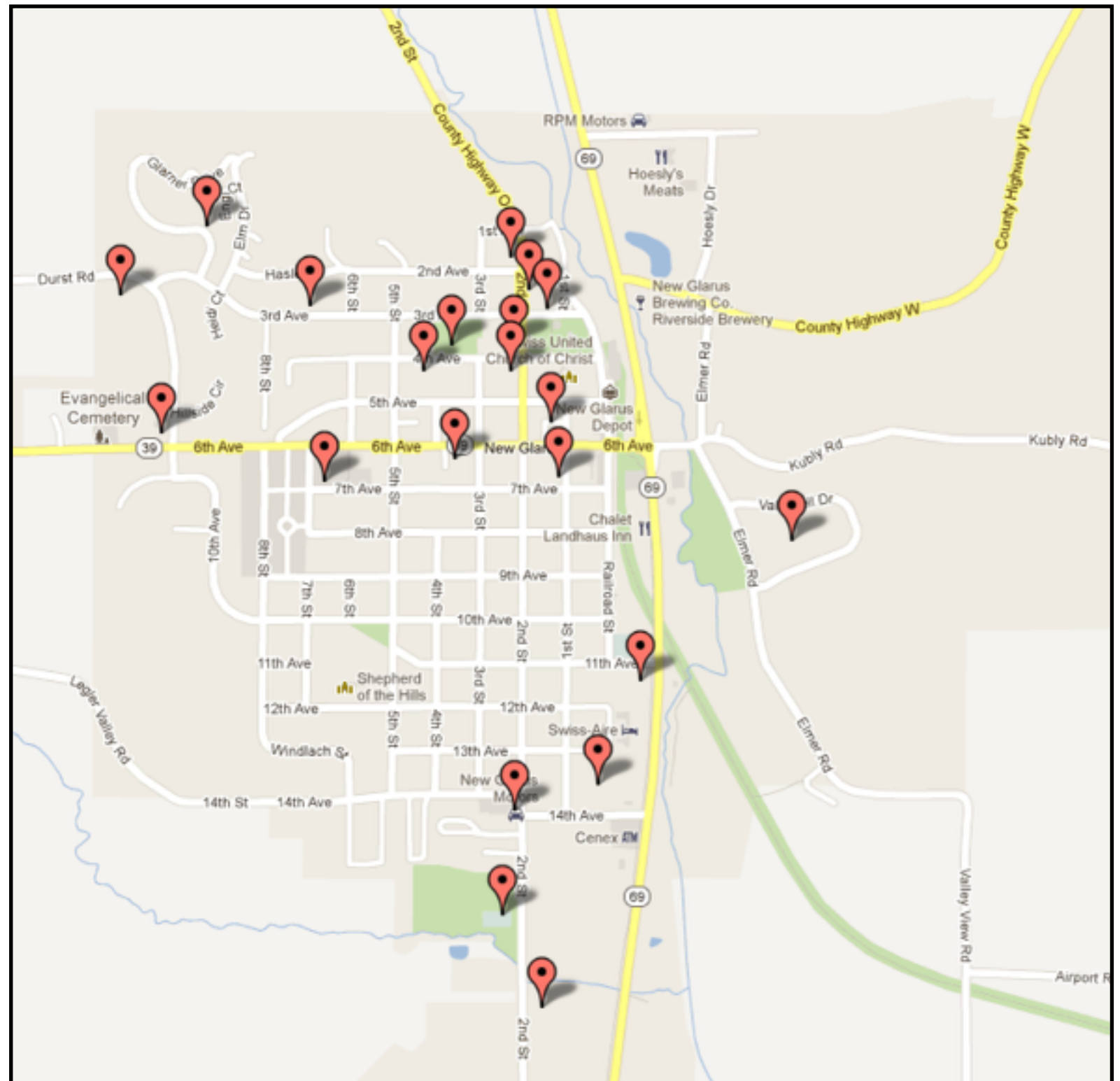
Is there space to allow for water retention?

Site accessible during festivals?

Is site in a floodplain?

Locations, Locations, Locations

Twenty-one sites assessed for a library (2001-2016)



Why Was Village Hall Declined?

- ❖ Use of Village Hall is inconsistent with 2014 referendum questions
- ❖ Remodeling options range from \$2.7-\$5.8M (inflation-adjusted), which is higher than Glarner Park proposal
- ❖ Key findings of detailed 2004 study indicate that Village Hall does not comply with current codes (ADA, energy, HVAC, fire), and basement suffers from water/dampness issues
- ❖ Expanding library within Village Hall would trigger “change of use” and require compliance with current code
- ❖ Library would need to be relocated during renovation
- ❖ Relocation of displaced departments would add to cost of renovation

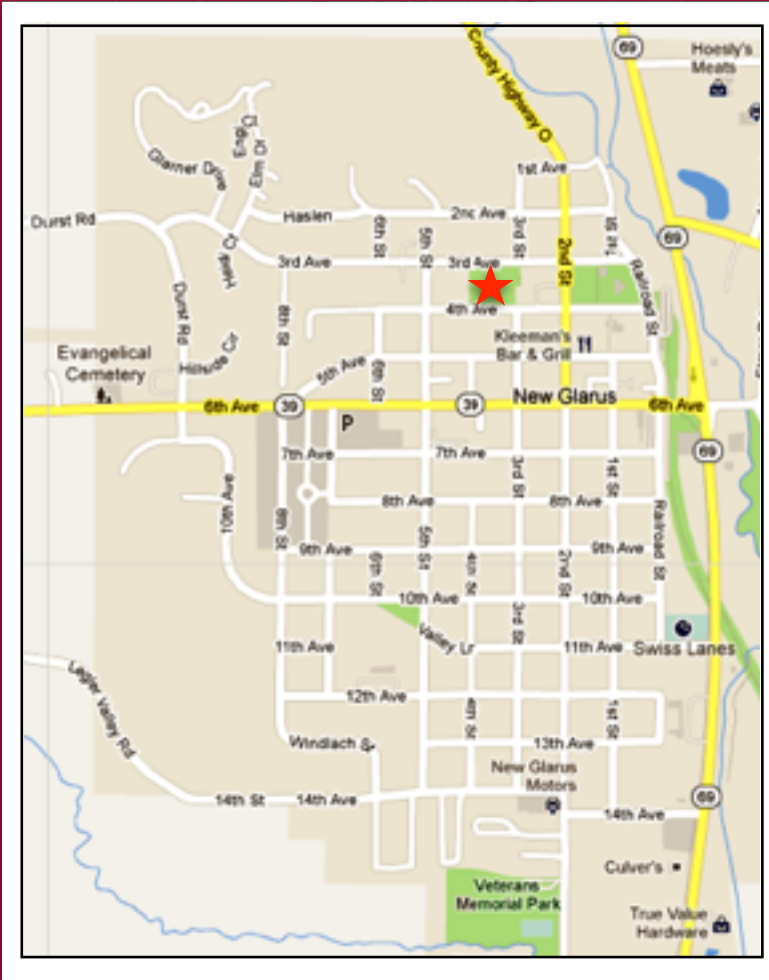
Glarner Park

How did the park become the location?

Key votes led to offering Glarner Park:

Starting in 2005	Glarner Park determined to be a good site, but was declined due to Strand Stormwater Development Plan
Spring 2013	Led by President Truttmann, Village Board established special subcommittee in Spring 2013 to find viable downtown site. (lumber yard, old drive-up bank, Glarner Park)
May 2013	Subcommittee determined Glarner Park was best site, recommended to Village Board
Aug. 2013	Village Board directed referenda on site and borrowing on April 2014 ballot
Oct. - Nov. 2013	Multiple Village Board votes to continue pursuing Glarner Park as library site
April 2014	Village-wide referenda held (125 favored Glarner Park, to 118 favoring the west side site)
March 2015	Library Board declined Village Hall (see sidebar)
June-Dec. 2015	Library Board prepares site development proposal for Glarner Park
May 2016	Village Board voted to draft resolution to affirm Glarner Park as new library site
June 2016	Village Board voted to table consideration of May 2016 resolution until Library Board held public meeting to answer questions

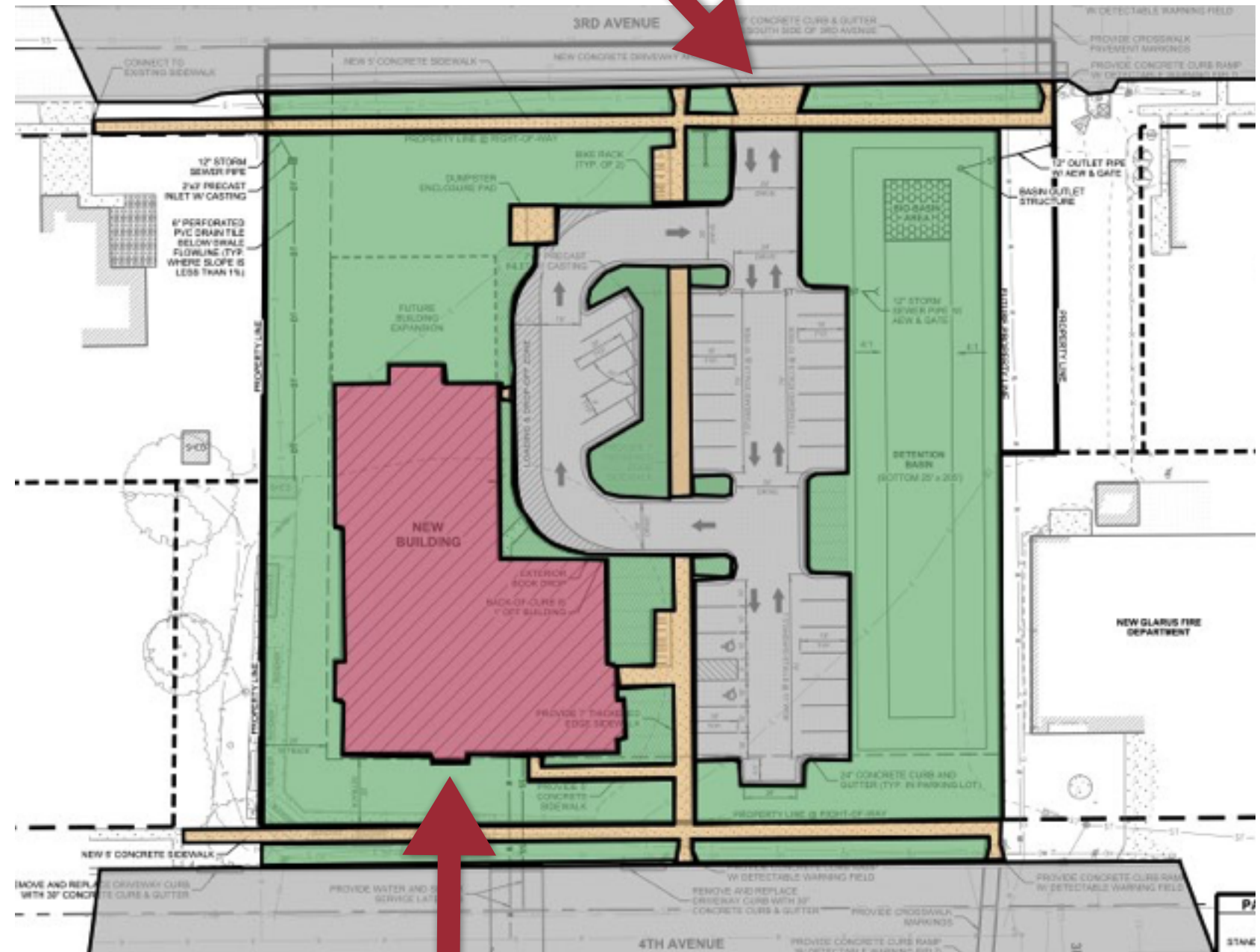
Site Details



- ❖ Site chosen in a 2014 village-wide referendum
- ❖ Location is within New Glarus' downtown district, near Village Hall, Village Park, and downtown businesses
- ❖ Site located at Glarner Park
- ❖ Building will be at current Glarner Park, between Third and Fourth Avenues
- ❖ Increased parking stalls for easier access to building

Proposed Site Plan

Access off Third Avenue



Building located out of flood plain

Building Concept

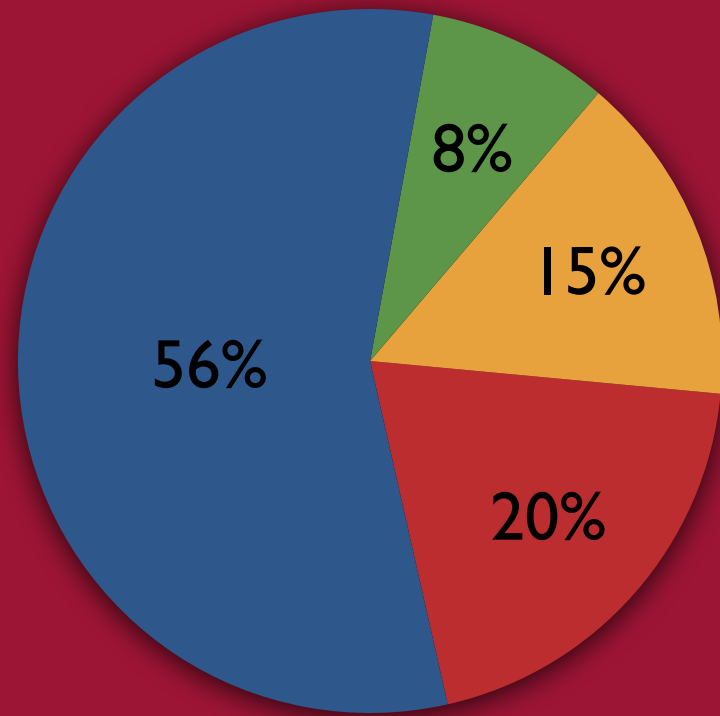


The concept is the goal, an early stage in the design process

- ❖ 11,965 total square feet
- ❖ Single story configuration
- ❖ Every area easily accessible with wheelchairs and strollers
- ❖ Swiss style architecture
- ❖ Space for books, magazines, CDs, and DVDs
- ❖ Multipurpose room for 75 people
- ❖ Special story time area
- ❖ More computer workstations
- ❖ Three private study rooms
- ❖ Quiet adult reading area
- ❖ Spaces for projects
- ❖ Excellent sight lines
- ❖ Designed to be staffed at current levels



By the Numbers

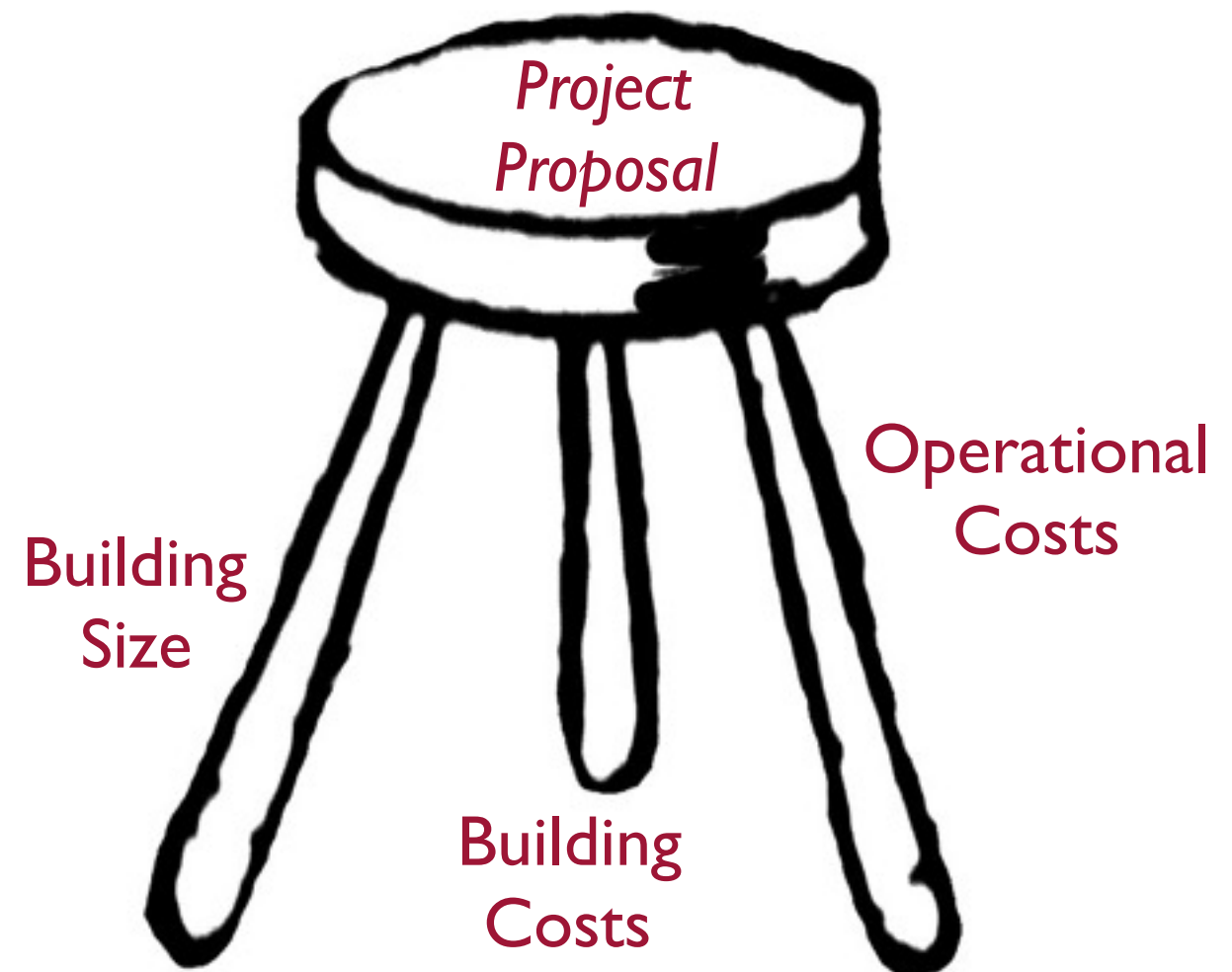


- Main Library (6,750 sq. ft.)**
Entryway & lobby, computer areas, collections, seating & work areas, and restrooms
- Group Areas (1,825 sq. ft.)**
Story time area, study rooms, multipurpose room
- Staff Areas (1,000 sq. ft.)**
Staff work and break areas, director's office, and book return
- Building Support (2,390 sq. ft.)**
Walls, janitor closet, kitchen, IT closet

The library totals 11,965 sq. ft.

A Difficult Balance

Building size, building cost, and operational costs



If size or costs are out of balance, the other legs must be adjusted